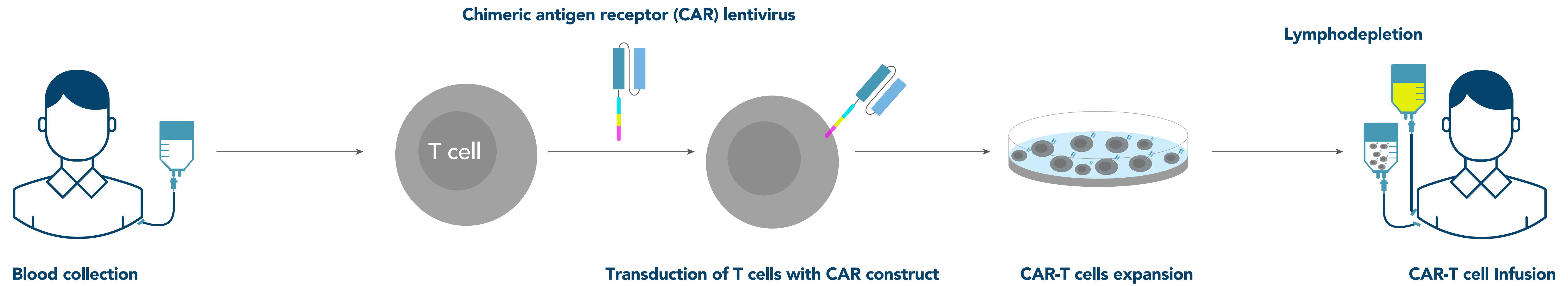
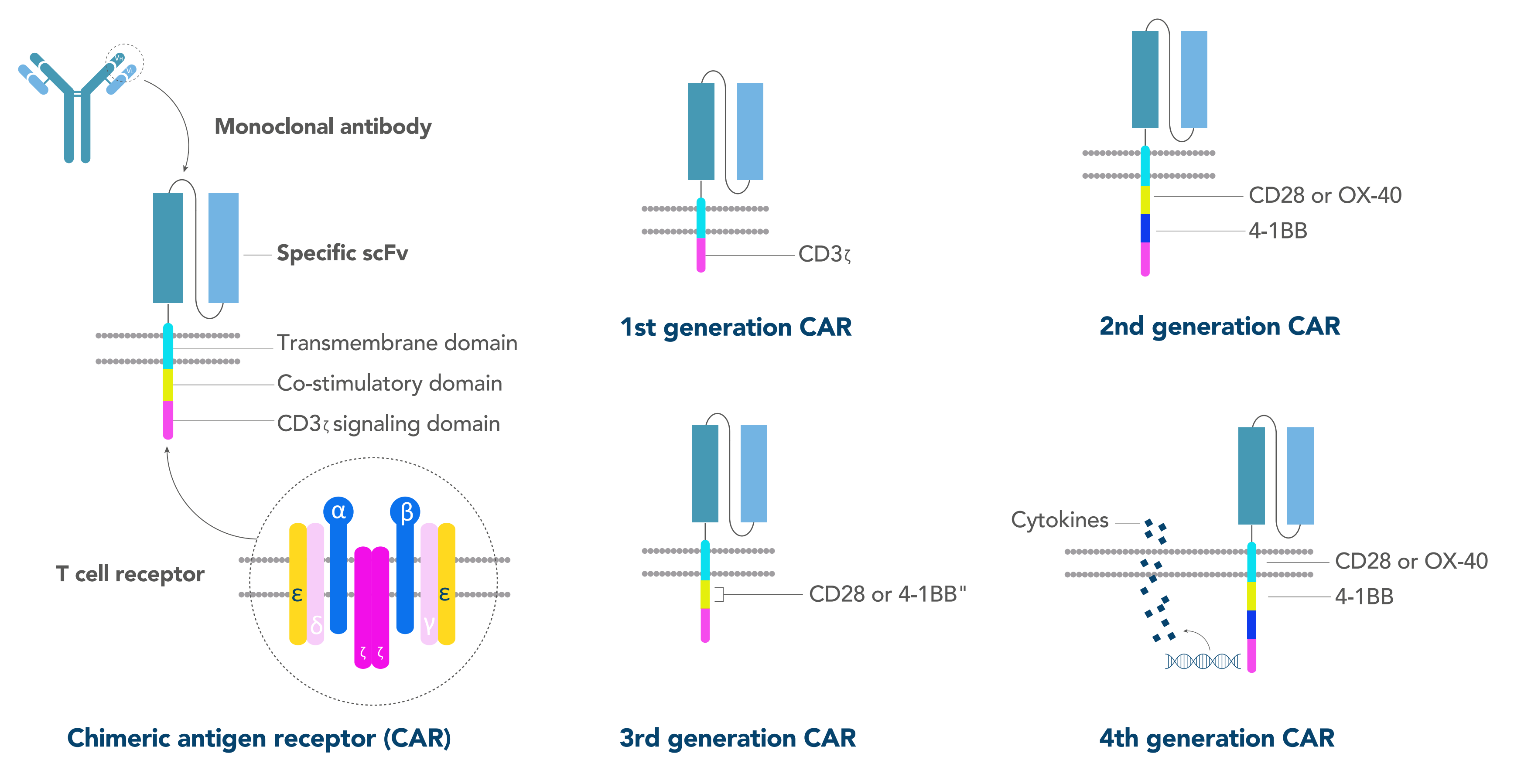


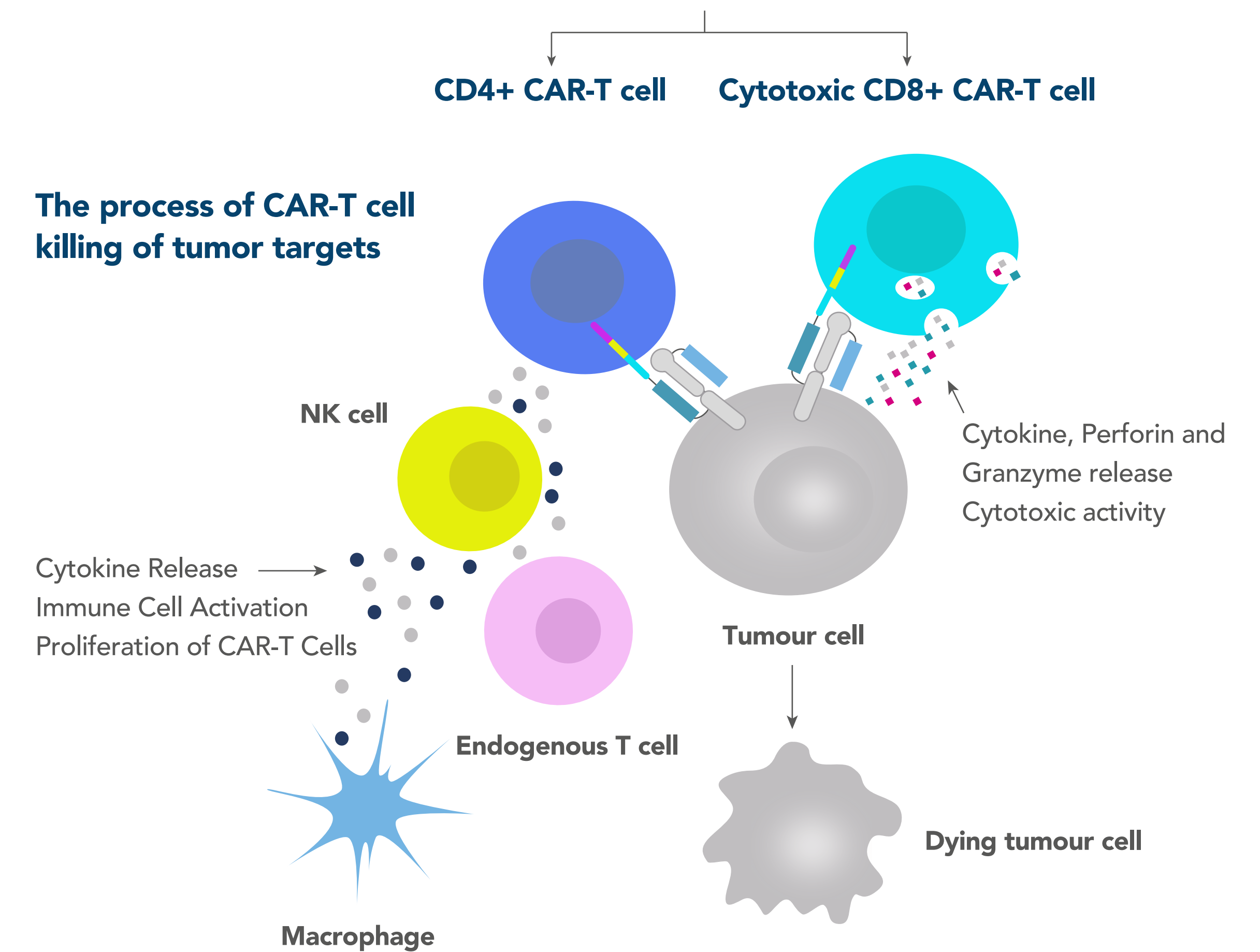
CAR-T Cells in Cancer Therapy



CAR Generations



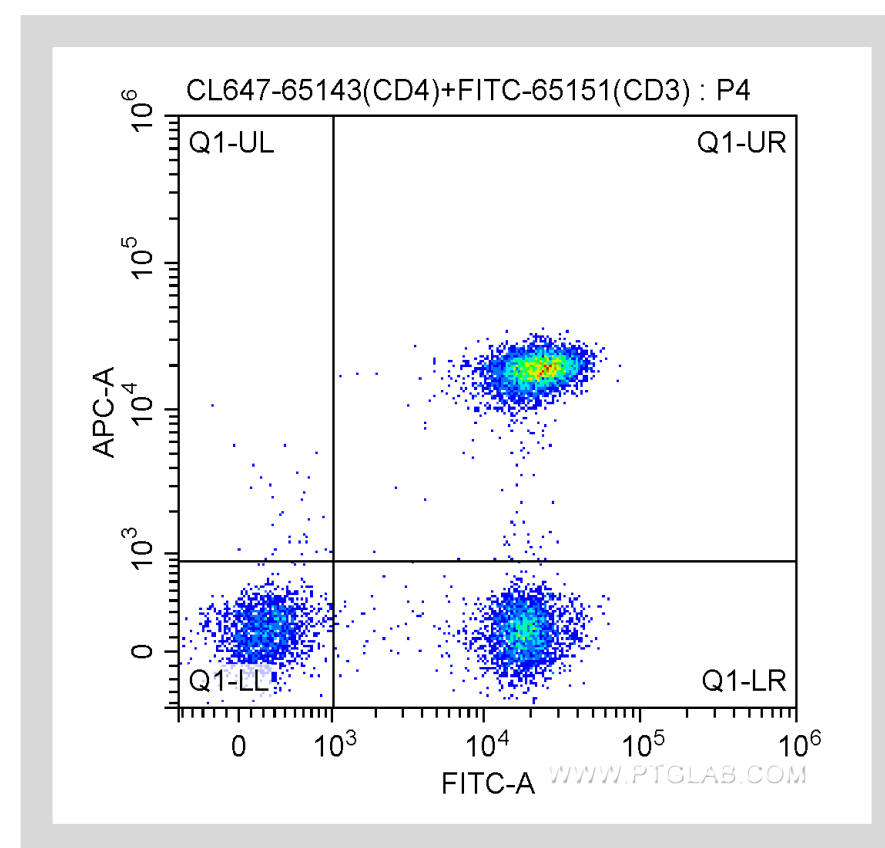
CAR-T cell



Related products

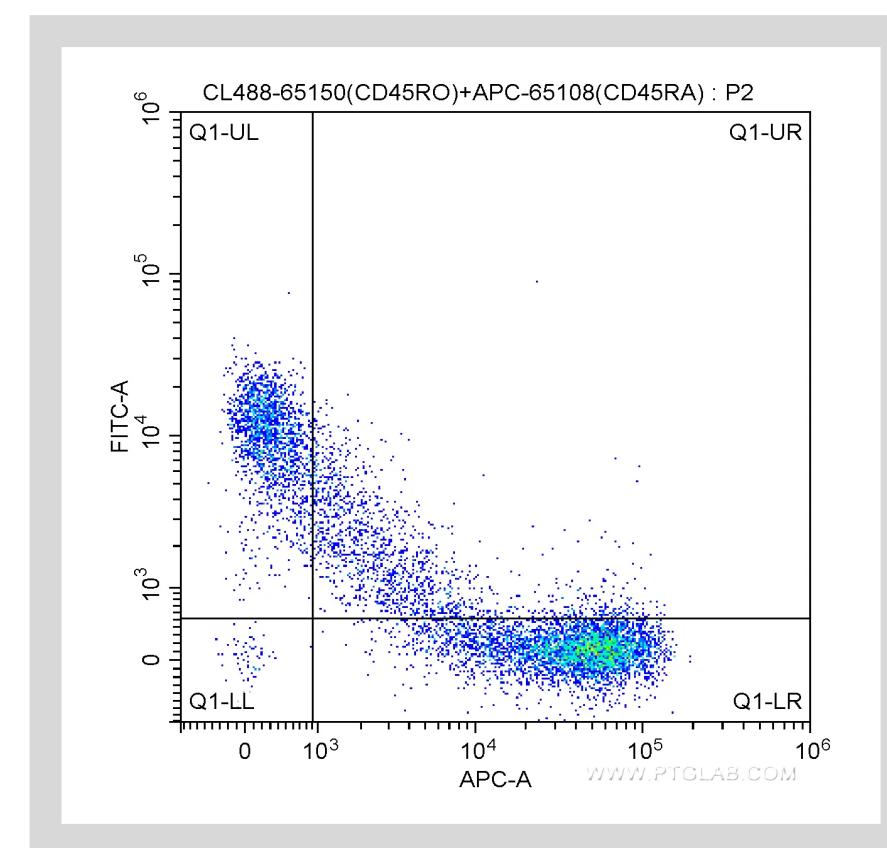
Antibodies for Flow Cytometry

Antigen	Clone	Reactive species	Purified	FITC	Coralite® 488	PE	APC	Coralite® 647
CD3	Hit3a	Human	65112-1-Ig	FITC-65112	CL488-65112	PE-65112	APC-65112	CL647-65112
CD3	OKT3	Human	65133-1-Ig	FITC-65133	CL488-65133	PE-65133	APC-65133	CL647-65133
CD3	UCHT1	Human	65151-1-Ig	FITC-65151	CL488-65151	PE-65151	APC-65151	CL647-65151
CD4	OKT4	Human	65134-1-Ig	FITC-65134	CL488-65134	PE-65134	APC-65134	CL647-65134
CD4	RPA-T4	Human	65143-1-Ig	FITC-65143	CL488-65143	PE-65143	APC-65143	CL647-65143
CD4	SK3	Human	65147-1-Ig	FITC-65147	CL488-65147		APC-65147	CL647-65147
CD8a	Hit8a	Human	65113-1-Ig	FITC-65113	CL488-65113		APC-65113	CL647-65113
CD8a	OKT8	Human	65135-1-Ig	FITC-65135	CL488-65135	PE-65135	APC-65135	CL647-65135
CD8a	RPA-T8	Human	65144-1-Ig	FITC-65144	CL488-65144	PE-65144	APC-65144	CL647-65144
CD8	SK1	Human	65146-1-Ig	FITC-65146	CL488-65146	PE-65146	APC-65146	CL647-65146
CD8	UCHT4	Human	65204-1-Ig		CL488-65204			CL647-65204
CD27	O323	Human	65132-1-Ig	FITC-65132	CL488-65132	PE-65132	APC-65132	CL647-65132
CD45RA	HI100	Human	65108-1-Ig	FITC-65108	CL488-65108	PE-65108	APC-65108	CL647-65108
CD45RO	UCHL1	Human	65150-1-Ig	FITC-65150	CL488-65150	PE-65150	APC-65150	CL647-65150
CD62L	DREG56	Human	65167-1-Ig	FITC-65167				
CD3e	145-2C11	Mouse	65060-1-Ig	FITC-65060		PE-65060	APC-65060	
CD3e	500-A2	Mouse	65061-1-Ig	FITC-65061	CL488-65061	PE-65061	APC-65061	CL647-65061
CD3	17A2	Mouse	65077-1-Ig	FITC-65077	CL488-65077	PE-65077	APC-65077	CL647-65077
CD4	GK1.5	Mouse	65104-1-Ig	FITC-65104	CL488-65104	PE-65104	APC-65104	CL647-65104
CD4	RM4-5	Mouse	65141-1-Ig	FITC-65141	CL488-65141	PE-65141	APC-65141	CL647-65141
CD8a	53-6.7	Mouse	65069-1-Ig	FITC-65069	CL488-65069	PE-65069	APC-65069	CL647-65069
CD44	IM7	Mouse	65117-1-Ig	FITC-65117	CL488-65117	PE-65117	APC-65117	CL647-65117
CD62L	MEL-14	Mouse	65123-1-Ig	FITC-65123		PE-65123	APC-65123	CL647-65123
CD69	H1.2F3	Mouse	65105-1-Ig	FITC-65105	CL488-65105	PE-65105	APC-65105	CL647-65105
CD103	2E7	Mouse	65047-1-Ig	FITC-65047	CL488-65047	PE-65047		CL647-65047
CD4	OX-35	Rat	65179-1-Ig	FITC-65179		PE-65179	APC-65179	



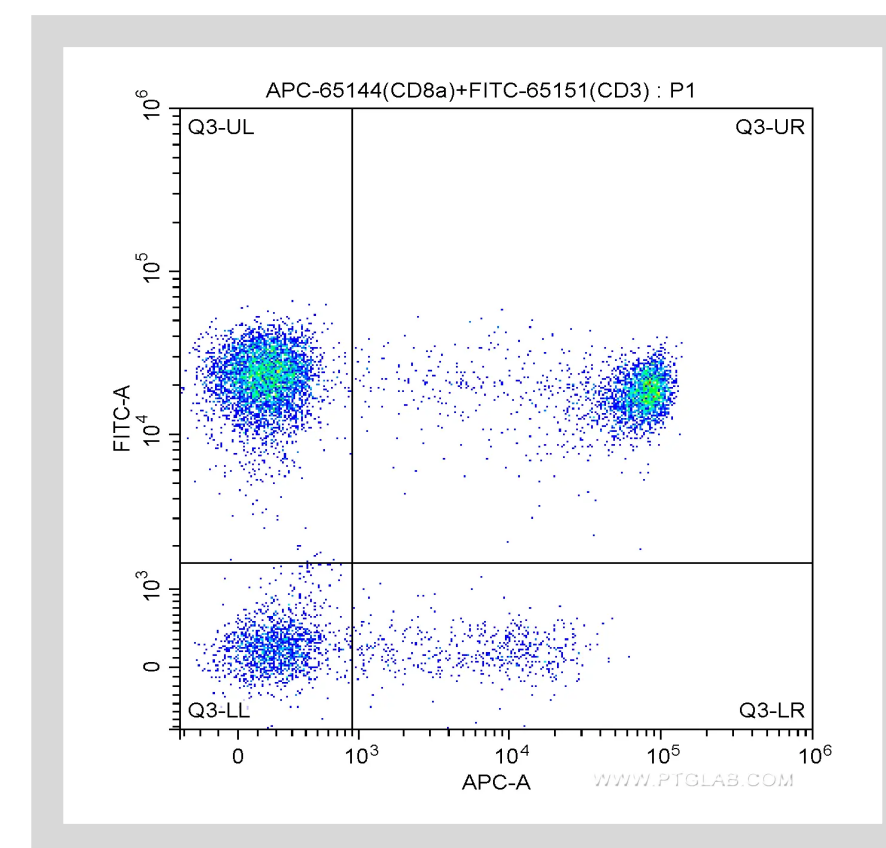
FITC Anti-Human CD3 (UCHT1)-----FITC-65151
Coralite® 647 Anti-Human CD4 (RPA-T4)-----CL647-65143

Human peripheral blood lymphocytes were surface stained with FITC Anti-Human CD3 (FITC-65151, Clone: UCHT1) and Coralite® 647 Anti-human CD4 (CL647-65143, Clone: RPA-T4)



Coralite® 488 Anti-Human CD45RO (UCHL1)-----CL488-65150
APC Anti-Human CD45RA (HI100)-----APC-65108

Human peripheral blood lymphocytes were surface stained with APC Anti-Human CD45RA (APC-65108, Clone: HI100) and Coralite® 488-conjugated Anti-Human CD45RO (CL488-65150, Clone: UCHL1).



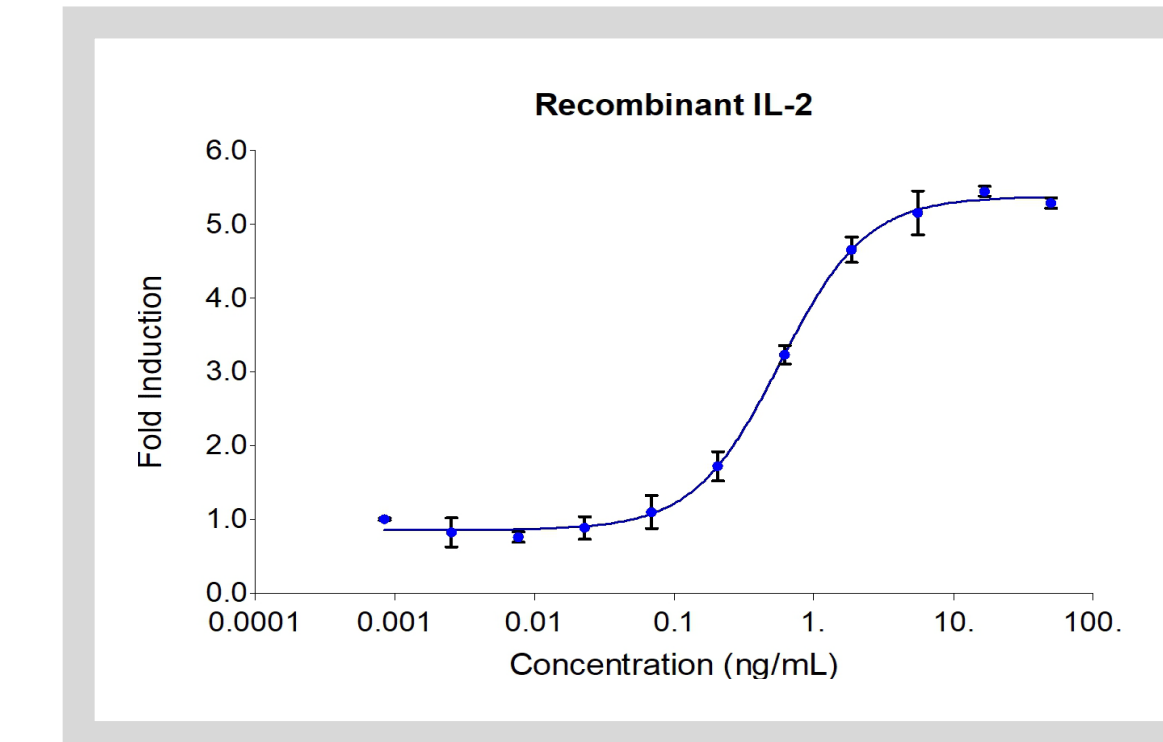
FITC Anti-Human CD3 (UCHT1)-----FITC-65151
APC Anti-Human CD8a (RPA-T8)-----APC-65144

Human peripheral blood lymphocytes were surface stained with FITC Anti-Human CD3 (FITC-65151, Clone: UCHT1) and APC Anti-Human CD8a (APC-65144, Clone: RPA-T8).

HumanKine® cytokines for CAR T cell expansion

Product type	AntigenName	CatalogNo
HumanKine® Recombinant Protein	Animal-free Recombinant Human IL-2	HZ-1015
HumanKine® Recombinant Protein	Animal-free Recombinant Human IL-7	HZ-1281
HumanKine® Recombinant Protein	Animal-free Recombinant Human IL-15	HZ-1323
HumanKine® Recombinant Protein	Animal-free Recombinant Human IL-21	HZ-1319
HumanKine® Recombinant Protein	Animal-free Recombinant Human IL-23	HZ-1254

*GMP grade available



Animal-free Recombinant Human IL-2 Catalog number: HZ-1015

The activity was determined by the dose-dependent stimulation of the proliferation of mouse CTLL-2 cells (mouse cytotoxic T cell line) using Promega CellTiter96® Aqueous Non-Radioactive Cell Proliferation Assay.

ELISA kits to determine T cell function

Product type	AntigenName	CatalogNo
ELISA Kit	AuthentiKine™ Human IFN-gamma ELISA Kit	KE00146
ELISA Kit	AuthentiKine™ Human TNF-alpha ELISA Kit	KE00154
ELISA Kit	AuthentiKine™ Human IL-10 ELISA Kit	KE00170
ELISA Kit	AuthentiKine™ Human IL-6 ELISA Kit	KE00139
ELISA Kit	Human IFN-gamma ELISA Kit	KE00063
ELISA Kit	Human TNF-alpha ELISA Kit	KE00068
ELISA Kit	Human IL-2 ELISA Kit	KE00017
ELISA Kit	Human IL-10 ELISA Kit	KE00012
ELISA Kit	Human PD-L1 ELISA Kit	KE00074
ELISA Kit	Human IL-6 ELISA Kit	KE00007
ELISA Kit	Human IL-8 ELISA Kit	KE00006
ELISA Kit	Human GM-CSF ELISA Kit	KE00003
ELISA Kit	Human IL-15 ELISA Kit	KE00102
ELISA Kit	Human Granzyme B ELISA Kit	KE00121
ELISA Kit	Mouse IFN-gamma ELISA Kit	KE10001
ELISA Kit	Mouse TNF-alpha ELISA Kit	KE10002
ELISA Kit	Mouse IL-2 ELISA Kit	KE10004
ELISA Kit	Mouse IL-10 ELISA Kit	KE10008
ELISA Kit	Mouse IL-6 ELISA Kit	KE10007
ELISA Kit	Mouse GM-CSF ELISA Kit	KE10015
ELISA Kit	Mouse IL-15 ELISA Kit	KE10028
ELISA Kit	Rat IFN-gamma ELISA Kit	KE20007
ELISA Kit	Rat TNF-alpha ELISA Kit	KE20001
ELISA Kit	Rat IL-2 ELISA Kit	KE20002
ELISA Kit	Rat IL-10 ELISA Kit	KE20003

Distributed by Fisher Scientific. Contact us today:

Austria: fishersci.at Belgium: fishersci.be Denmark: fishersci.dk
Germany: fishersci.de Ireland: fishersci.ie Italy: fishersci.it
Finland: fishersci.fi France: fishersci.fr Netherlands: fishersci.nl
Norway: fishersci.no Portugal: fishersci.pt Spain: fishersci.es
Sweden: fishersci.se Switzerland: fishersci.ch UK: fishersci.co.uk

© 2022 Thermo Fisher Scientific Inc. All rights reserved.
Trademarks used are owned as indicated at fishersci.com/trademarks.

